



# Let's Draw Symbols

by Beatrice Wilder

Product of Australia

## Contents

Sheet 1	Basic Information about Symbols
Sheet 2	Treble Clefs
Sheet 3	Bass Clefs
Sheet 4	Trace Six
Sheet 5	Connections
Sheet 6	Wordsearch
Sheet 7	Five Rests
Sheet 8	Sharps, Flats, Naturals
Sheet 9	Quiz
Sheet 10	Crossword
Sheet 11	Drawing Big Symbols
Sheet 12	Drawing Small Symbols
Sheet 13	A Little Revision

Copyright © Beatrice Wilder 2002

Published in 2002 by **Music Fun**

Reprinted in 2007

P.O. Box 342 Katoomba NSW 2780

19 Millyard Lane Katoomba 2780

Australia

Phone: (02) 4782 3073

Fax: (02) 4782 6362

Email: [info@musicfun.com.au](mailto:info@musicfun.com.au)

Web: [www.musicfun.com.au](http://www.musicfun.com.au)



# Let's Draw Symbols

## Sheet 1

### Basic Information about Symbols



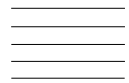
**treble clef**  
also called a G clef



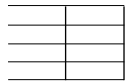
**bass clef**  
also called an F clef



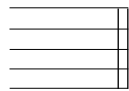
**brace**  
This is really a brace and bracket. The brace is the upright line and the bracket curls around it. It tells us that the notes on both staves are to be played at the same time.



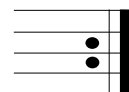
**staff or stave**  
The five lines on which we write music



**bar lines**  
The upright lines dividing sections (bars) of music



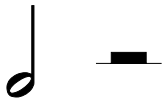
**double bar lines**  
two upright lines to mark the end of a section or a piece of music



**repeat sign**  
these dots tell us to repeat a section of music



**semibreve (or whole note)**  
The semibreve is the longest note in general use. The **semibreve rest** is in the shape of a box hanging below the fourth line of the staff.



**minim (or half note)**  
A minim is played for half the time of a semibreve. The **minim rest** is in the shape of a box sitting on the third line of the staff.



**dotted minim**  
A dot placed after any note makes it longer by half of its own value.



**crotchet (or quarter note)**  
A crotchet is played for half of the time of a minim. The distinctive **crotchet rest** is to its right.



**quaver (or eighth note)**  
A quaver is played for half of the time of a crotchet. Its rest is to its right. Two or more quavers are joined by a beam.



**semi-quaver (or 16th note)**  
A semi-quaver is played for half the time of a quaver. Its rest is to its right. Two or more semi-quavers are joined by two beams.



**sharp**  
A sharp sign placed in front of a note tells us that the note must be played one semitone higher.



**flat**  
A flat sign placed in front of a note tells us that the note must be played one semitone lower.



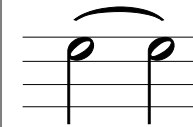
**natural**  
A natural sign placed in front of a note tells us that a note previously altered must now be played at its original pitch.



**pause**  
A pause sign over a note tells us that the note should be held for longer than its usual value.



**slur, or phrase line**  
A slur or phrase line can be drawn over two or more notes. These notes are to be played smoothly, connected together. They are usually notes of different pitch.



**tie**  
Notes which are connected by a tie are always of the same pitch. These notes are 'tied' together and are played as one note, held for their combined values.



# Treble Clefs

Trace the Treble Clefs starting at the arrow point. You may trace each one in a different colour.

Complete these Treble Clefs. Make sure that they reach from the top line to the bottom line..

Can you draw a treble clef by yourself?



# Bass Clefs

Trace the Bass Clefs starting at the arrow point. You may trace each one in a different colour.

Complete these bass clefs.

Can you draw two bass clefs without help?

\_\_\_\_\_

Do you remember how to draw a treble clef?



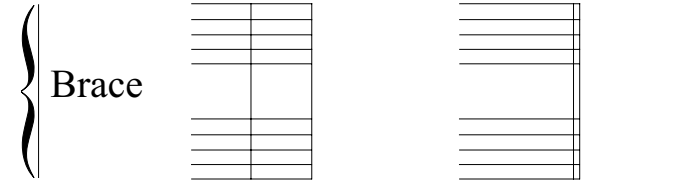
# Let's Draw Symbols

Sheet 4

# Trace Six

Here are six symbols for you to trace. They are:

Name .....



Can you arrange them on this Grand Stave in the proper places?

Name the symbols used: 1 .....

2 ..... 3 ..... 4 ..... 5 ..... 6 .....



# Connections

Find the words for each of the music symbols and join each word to its symbol with a straight line.

treble clef  
 bass clef  
 brace  
 repeat sign  
 bar lines  
 double bar lines  
 semibreve  
 pause  
 minim (or half note)  
 crotchet (or quarter note)  
 quaver (or eighth note)  
 semiquaver (or 16th note)  
 dotted minim

natural  
 sharp  
 flat  
 2 quavers joined  
 2 semiquavers joined  
 slur, or phrase line  
 tie  
 staff  
 crotchet rest  
 quaver rest  
 semiquaver rest  
 minim rest  
 semibreve rest



# Let's Draw Symbols

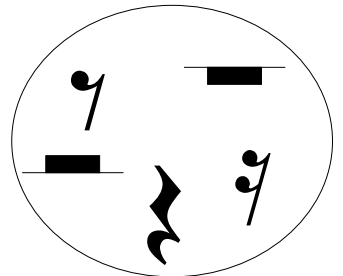
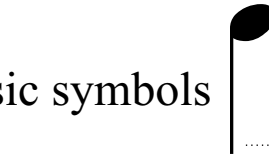
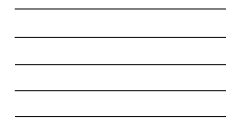
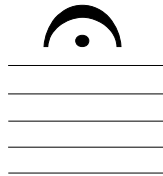
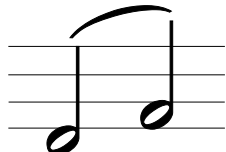
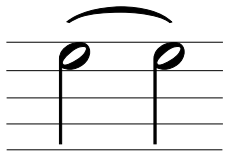
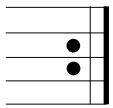
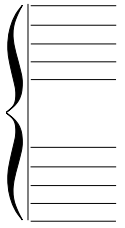
## Sheet 6

Name .....

# Wordsearch

Find words reading across or down for each of the music symbols and write the correct label for each one.

a	f	t	i	e	s	t	a	v	e	s	h
e	l	s	q	s	h	a	e	t	v	e	s
n	a	t	u	r	a	l	m	r	e	m	e
b	t	e	a	a	r	l	m	i	n	i	m
r	s	b	v	s	p	a	u	s	e	q	i
a	l	r	e	p	e	a	t	s	e	u	b
c	u	a	r	e	s	t	s	v	e	a	r
e	r	c	r	o	t	c	h	e	t	v	e
b	a	s	s	c	l	e	f	r	e	e	v
t	r	e	b	l	e	c	l	e	f	r	e





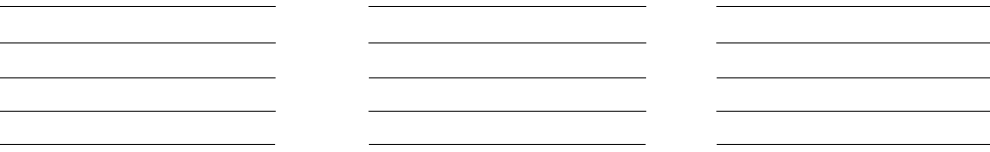
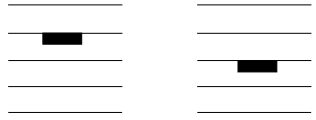



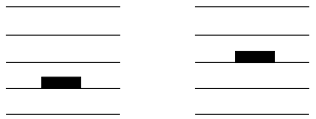


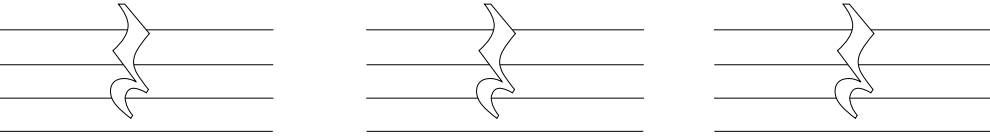
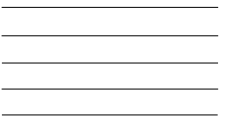



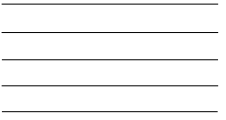


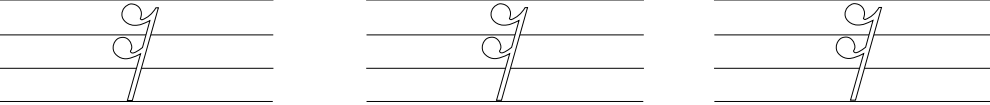
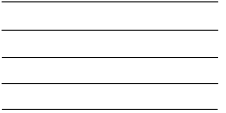
.....





# Five Rests

Every note has its own rest. The rest has the same value as the note that it belongs to.  
Can you recognize and draw each rest?

<p>semibreve</p>  <p>whole note</p>	<p>semibreve rest</p> 	<p>How well can you draw semibreve rests?</p> 	<p>Which one is correct?</p> 
<p>minim</p>  <p>half note</p>	<p>minim rest</p> 	<p>How well can you draw minim rests?</p> 	<p>Which one is correct?</p> 
<p>crotchet</p>  <p>quarter note</p>	<p>crotchet rest</p> 	<p>Trace and colour these crotchet rests.</p> 	<p>Draw a crotchet rest</p> 
<p>quaver</p>  <p>eighth note</p>	<p>quaver rest</p> 	<p>Trace and colour these quaver rests.</p> 	<p>Draw a quaver rest</p> 
<p>semiquaver</p>  <p>16th note</p>	<p>semiquaver rest</p> 	<p>Trace and colour these semiquaver rests.</p> 	<p>Draw a semiquaver rest</p> 



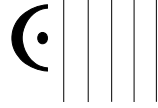
# Sharps, Flats, Naturals

Trace the sharps, flats and naturals.

Sharps in spaces	Sharps on lines	The sharp must be placed on the same line or in the same space as the note that it belongs to.	Draw sharps next to both of these notes.
Flats in spaces	Flats on lines	The flat must be placed on the same line or in the same space as the note that it belongs to. The same rule applies to naturals (below).	Draw flats next to both of these notes.  Draw naturals next to both of these notes.

# QUIZ

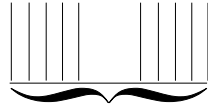
(Tick the correct answer)



- Treble clef
- Semibreve
- Pause



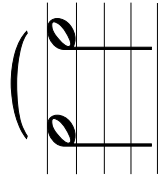
- Bass clef
- Treble clef
- Natural



- Bass clef
- Brace
- Slur



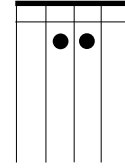
- Bass clef
- Treble clef
- Quaver



- Tie
- Semibreve
- Slur



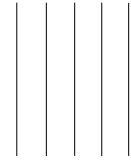
- Minim rest
- Minim
- Semibreve



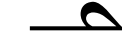
- Quaver
- Minim rest
- Repeat sign



- Semibreve rest
- Crotchet
- Minim rest



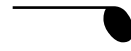
- Tie
- Staff
- Bar lines



- Flat
- Natural
- Crotchet



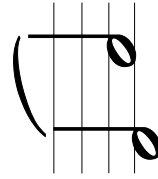
- Natural
- Sharp
- Repeat sign



- Minim
- Natural
- Crotchet



- Semibreve rest
- Minim rest
- Flat



- Tie
- Brace
- Slur

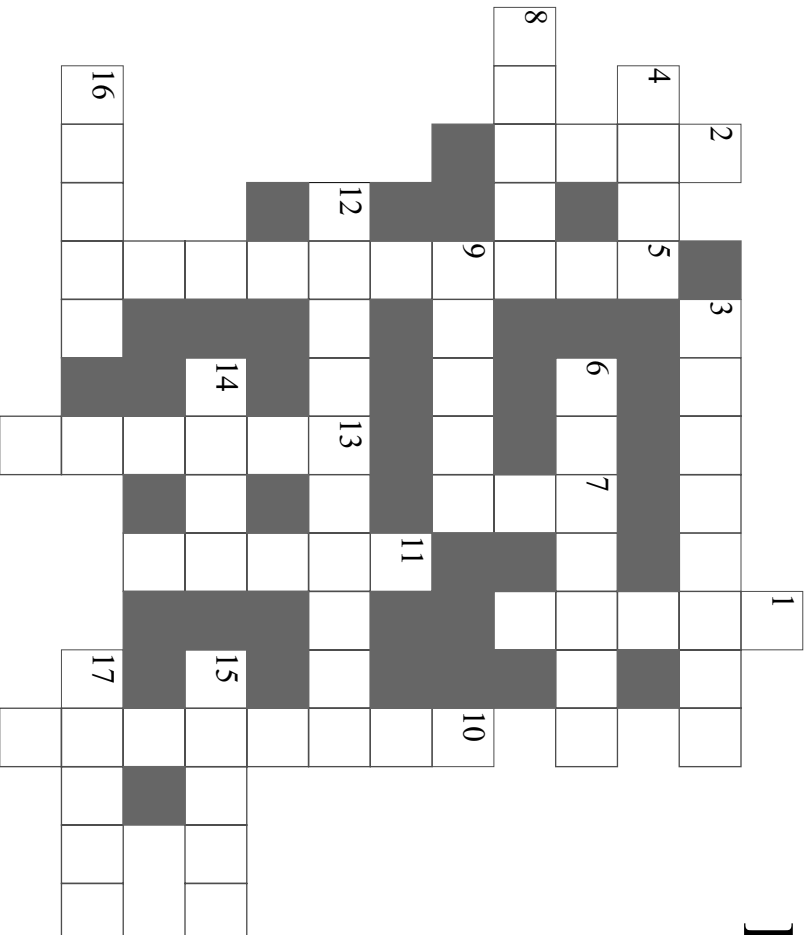


- Quaver
- Crotchet
- Semiquaver



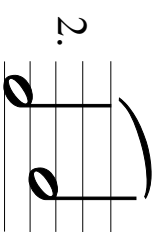
- Minim rest
- Crotchet rest
- Quaver rest

## CROSSWORD

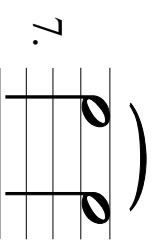


### DOWN

1. #



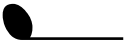
5. 



8. **3**  
How many beats  
in each bar for this  
time signature?

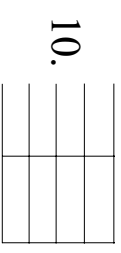
**4**

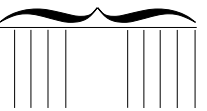
### ACROSS

3. 


4. 

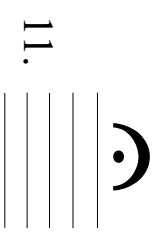
6. 



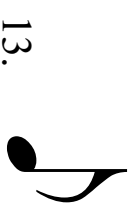
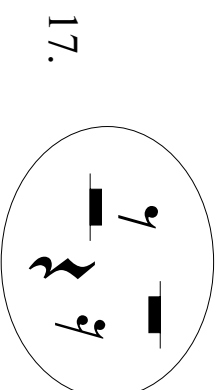
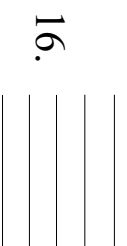
9. 

12. 

14.  \_\_\_\_\_ clef



15. 







# Drawing SMALL Symbols

Can you draw the symbols into their boxes? Cross them out as you use them.

What is the name of the symbol that is left over. Write it here .....

Dotted minim

Natural

Treble clef

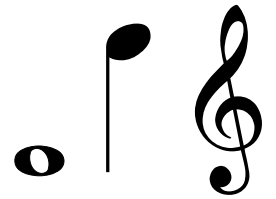
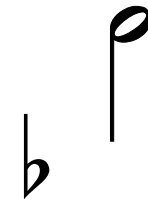
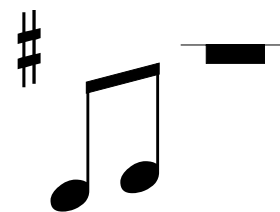
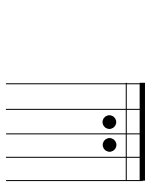
Bass clef

Crotchet rest

Whole note

Sharp

Quarter note



Pause

Flat

Half note

Semibreve rest

Eighth note

Minim rest

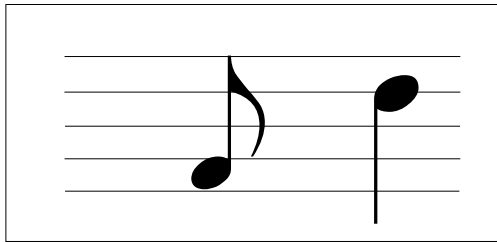
Two quavers

Repeat sign

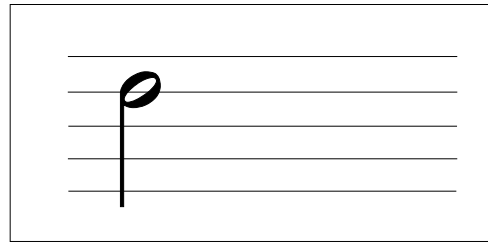


# A Little Revision

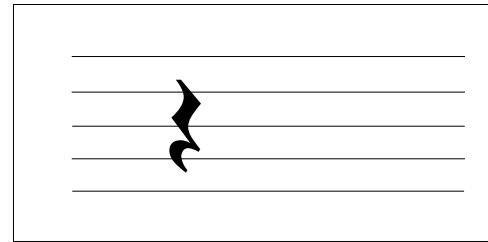
Can you do this ..... ?



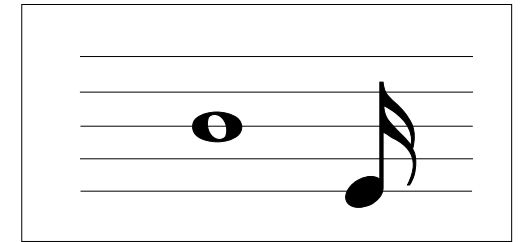
Draw a sharp next to the quaver



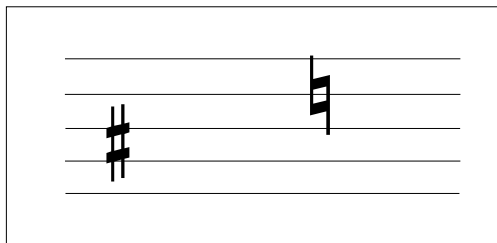
Draw the rest that belongs to this note.



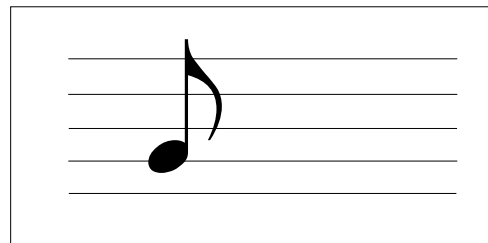
Draw the note that belongs to this rest.



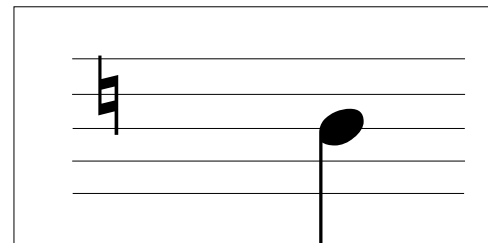
Draw a flat next to the whole note.



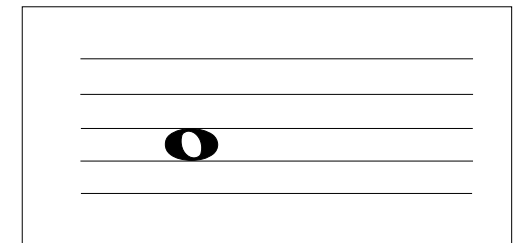
Draw a quarter note next to the sharp.



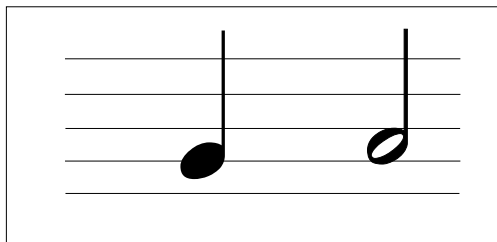
Draw the rest that belongs to this note.



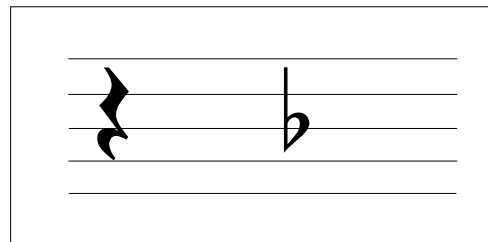
Draw a semibreve next to the natural.



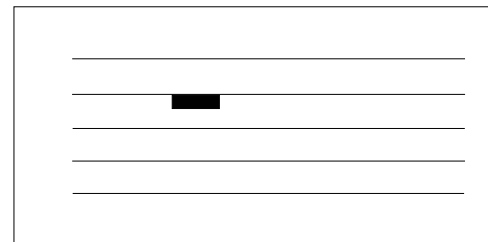
Draw the rest that belongs to this note.



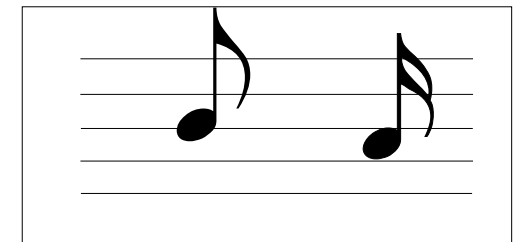
Draw a natural next to the minim.



Draw a half note next to the flat.



Draw the note that belongs to this rest.



Draw a flat next to the quaver and a sharp next to the 16th note.