



Key Signatures Card Game

by Beatrice Wilder

Print these cards out on the 'business card' or 'credit card' setting of your printer. Choose 'borderless printing' with the LEAST extension amount for the best results.

The first page named, "card backs," should be printed on the backs of all the cards.

In order to play the game, some of the cards need to have a greater number of copies printed out. The number of cards needed is indicated alongside the page names.

The image is a vertical graphic with a red rounded rectangular border. Inside, there are several red musical notes scattered throughout. At the top, the words "music fun" are written in a bold, black, sans-serif font, with the letters slightly curved to follow the top edge. In the center is a large, red, circular character with a thick black outline. The character has two large, white eyes with black pupils and a simple, curved black smile. A thick, red, wavy line extends from the bottom of the character's neck, curving downwards and to the right. At the bottom of the graphic, the words "concentrating on music" are written in a bold, black, sans-serif font, with "concentrating" on the top line and "on music" on the bottom line.

music fun

**concentrating
on music**

Key Signature Game

(Two or more players)

Shuffle the cards well. Deal out five cards to each player and place the rest of the pack in the middle of the table face down. Take the top card and place it face up next to the pack. The aim of the game is to make a one octave scale consisting of a clef, a key signature and two cards containing the eight notes that make up the major and minor scale that matches that key signature. If a player cannot do that with the cards he is dealt then he must, when it is his turn, pick up a card from the face down stack or choose the top card from the face up stack next to it. He must now check to see if this card fits with the set he is trying to produce and place one card onto the face up card pile so that he always has five cards. The player who makes the first scale wins the game.

N.B. For this game the notes in the treble range from Middle C to B above the stave and in the bass from Eb below the stave to D above the stave.

Key Signatures

© Music Fun 2011

KEY

Diagram illustrating the key signature for D Major or B Minor. It shows a treble clef with a sharp sign (F#) on the first line (F) and a bass clef with a sharp sign (C#) on the second line (C). The key signature is labeled "D, Major or B, Minor".

D, Major or B, Minor	
A, Major or F, Minor	
E, Major or C, Minor	
B, Major or G, Minor	
F, Major or D, Minor	
C, Major or A, Minor	

Diagram illustrating the key signature for G Major or E Minor. It shows a treble clef with sharp signs (F# and C#) on the first and second lines (F and C) and a bass clef with sharp signs (F# and C#) on the second and third lines (C and F). The key signature is labeled "G, Major or E, Minor".

B, Major or G, Minor	
E, Major or C, Minor	
A, Major or F, Minor	
D, Major or B, Minor	
G, Major or E, Minor	
C, Major or A, Minor	

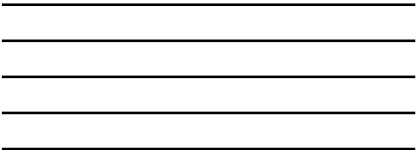
Key Signatures
© Music Fun 2011



Key Signatures
© Music Fun 2011



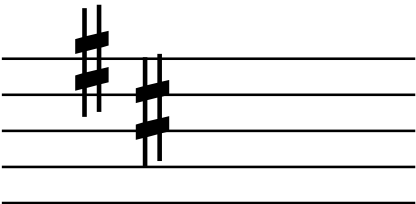
Key Signatures
© Music Fun 2011



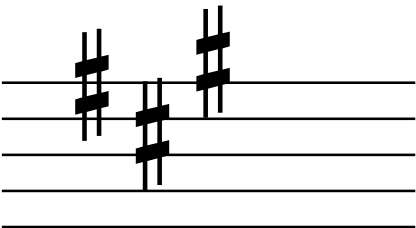
Key Signatures
© Music Fun 2011



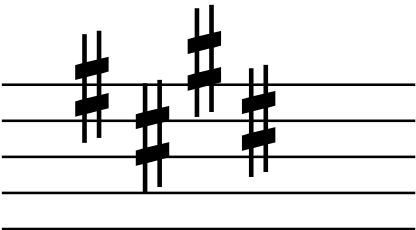
Key Signatures
© Music Fun 2011



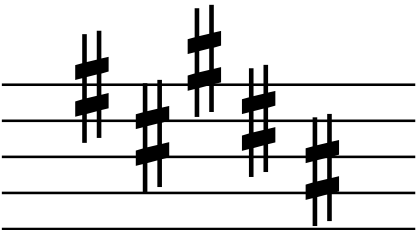
Key Signatures
© Music Fun 2011



Key Signatures
© Music Fun 2011



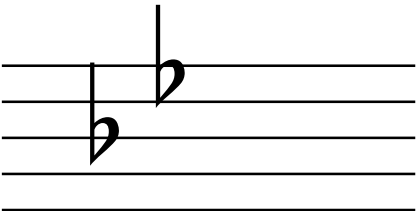
Key Signatures
© Music Fun 2011



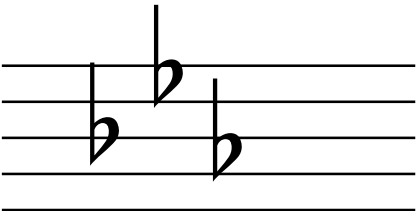
Key Signatures
© Music Fun 2011



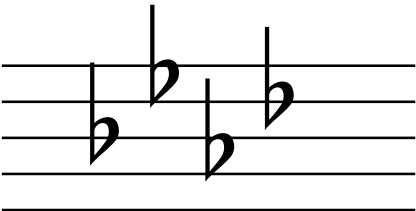
Key Signatures
© Music Fun 2011



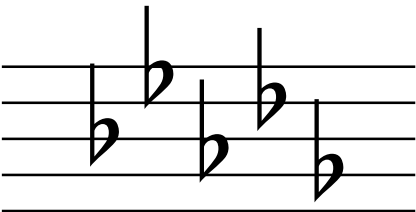
Key Signatures
© Music Fun 2011



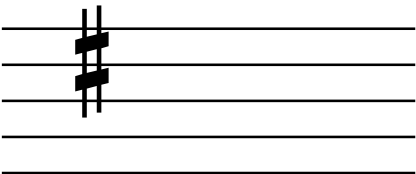
Key Signatures
© Music Fun 2011



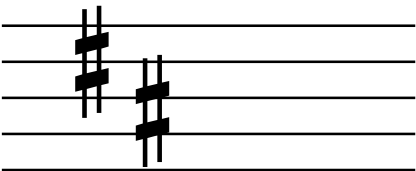
Key Signatures
© Music Fun 2011



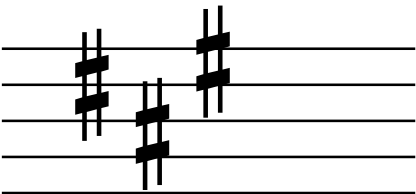
Key Signatures
© Music Fun 2011



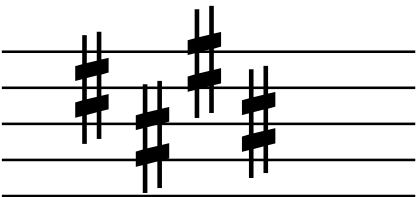
Key Signatures
© Music Fun 2011



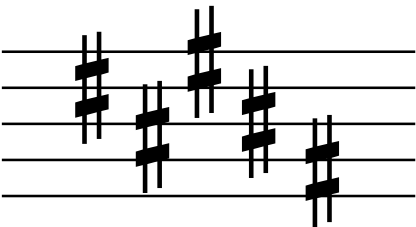
Key Signatures
© Music Fun 2011



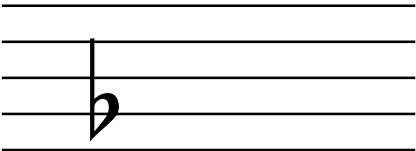
Key Signatures
© Music Fun 2011



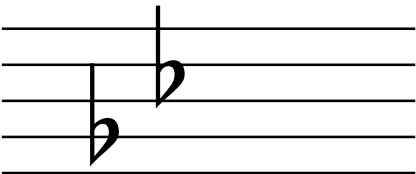
Key Signatures
© Music Fun 2011



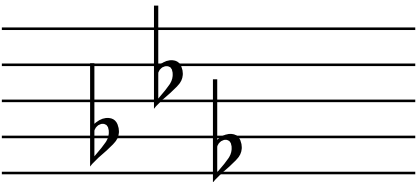
Key Signatures
© Music Fun 2011



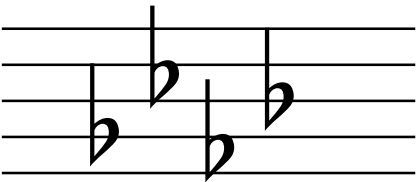
Key Signatures
© Music Fun 2011



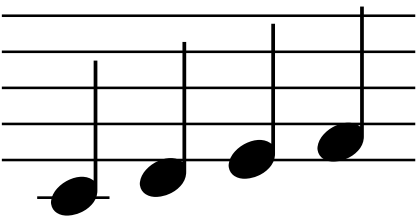
Key Signatures
© Music Fun 2011



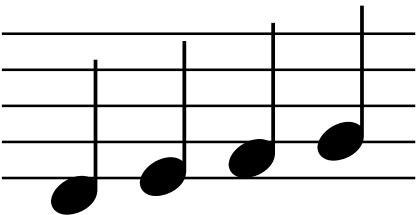
Key Signatures
© Music Fun 2011



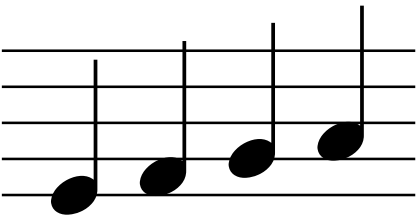
Key Signatures
© Music Fun 2011



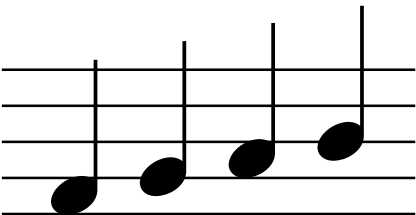
Key Signatures
© Music Fun 2011



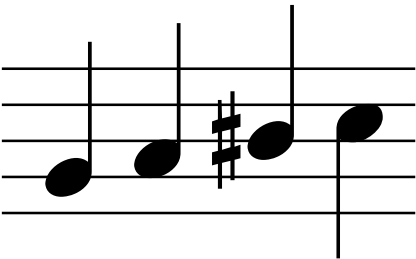
Key Signatures
© Music Fun 2011



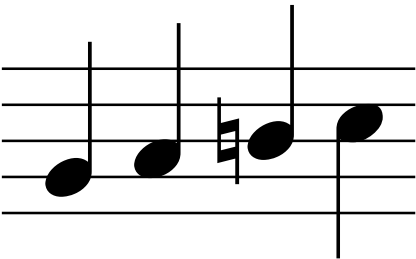
Key Signatures
© Music Fun 2011



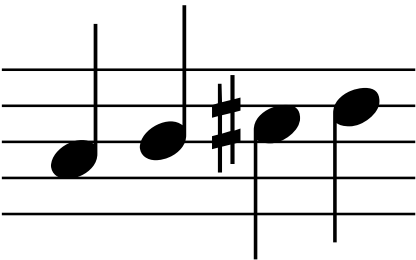
Key Signatures
© Music Fun 2011



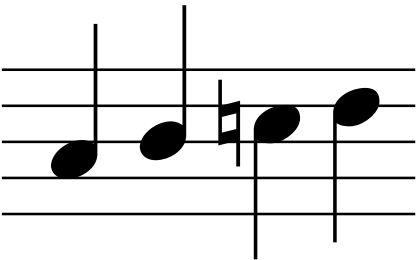
Key Signatures
© Music Fun 2011



Key Signatures
© Music Fun 2011



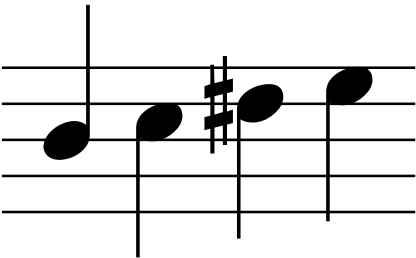
Key Signatures
© Music Fun 2011



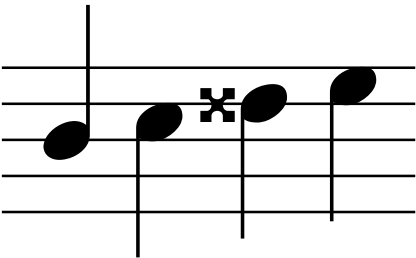
Key Signatures
© Music Fun 2011



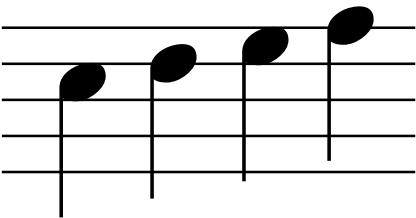
Key Signatures
© Music Fun 2011



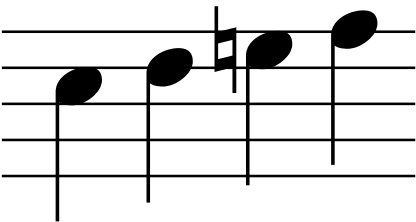
Key Signatures
© Music Fun 2011



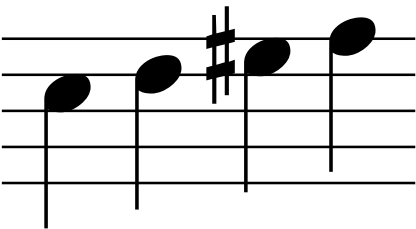
Key Signatures
© Music Fun 2011



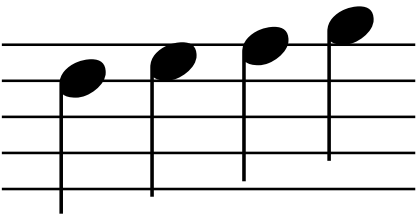
Key Signatures
© Music Fun 2011



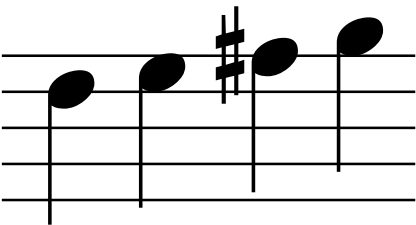
Key Signatures
© Music Fun 2011



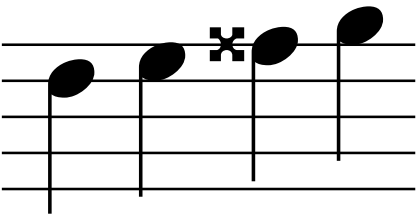
Key Signatures
© Music Fun 2011



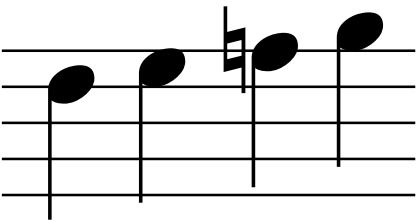
Key Signatures
© Music Fun 2011



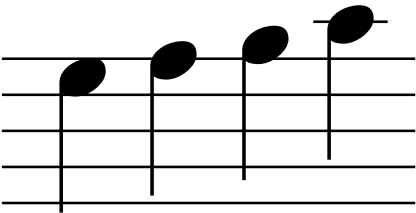
Key Signatures
© Music Fun 2011



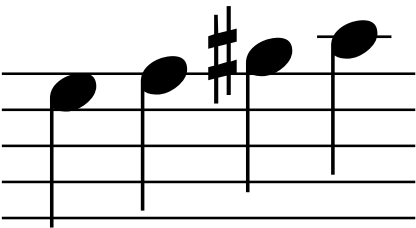
Key Signatures
© Music Fun 2011



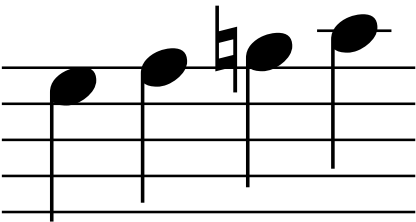
Key Signatures
© Music Fun 2011



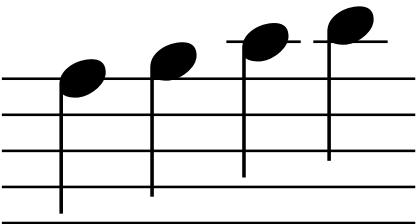
Key Signatures
© Music Fun 2011



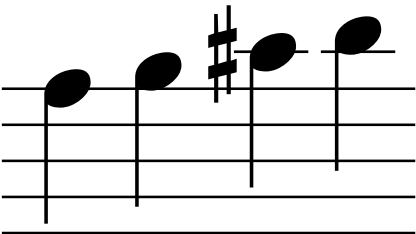
Key Signatures
© Music Fun 2011



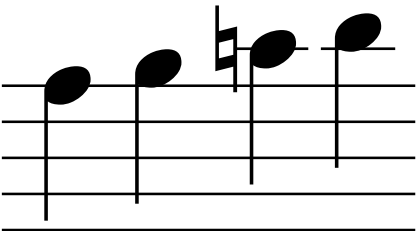
Key Signatures
© Music Fun 2011



Key Signatures
© Music Fun 2011



Key Signatures
© Music Fun 2011



Key Signatures
© Music Fun 2011