



Product of Australia

Note Names

Contents

Worksheet 1	First Notes Colour and copy large notes for small hands.
Worksheet 2	Alphabet Notes Completing note names in alphabetical order, then scrambled.
Worksheet 3	Tracing and Drawing C's Getting to know where the five C's are
Worksheet 4	Wherever there's a C you find an ACE Tracing and drawing A C E in different positions on the staff.
Worksheet 5	Mystery Word Puzzle. Extra notes have been written in to make up a 'missing' word.
Worksheet 6	Match Them Up Draw lines between groups of letters and notes.
Worksheet 7	Music Cross Word The notes are given as the clues to the crossword.
Worksheet 8	Hidden Story 1 A story with letters missing. The clues are notes written in the treble.
Worksheet 9	Hidden Story 2 A story with letters missing. The clues are notes written in the bass.
Worksheet 10	Word Transfer 1 Re-write words using notes on lines or in spaces as required. All in the treble.
Worksheet 11	Word Transfer 2 Re-write words using notes on lines or in spaces as required. All in the bass.
Worksheet 12	Keyboard Knowledge Notes are drawn on a keyboard and must be transferred to a stave.
Worksheet 13	Information Sheet Names of all the notes used in these worksheets.

Copyright © Beatrice Wilder 2002
Published in 2002 by **Music Fun**

P.O. Box 342 Katoomba NSW 2780
19 Millyard Lane Katoomba 2780

Phone: (02) 4782 3073

Email: info@musicfun.com.au
Web: www.musicfun.com.au



Note Names

Worksheet 1

Name

First Notes

Colour the letter names of these notes

A musical staff with a treble clef. Five notes are placed on the lines from bottom to top: C, D, E, F, and G. Each letter is enclosed in an oval.

Copy them here:

A musical staff with a treble clef. Five empty oval shapes are placed on the lines from bottom to top, corresponding to the notes in the previous section.

Colour and complete these notes.

A musical staff with a treble clef. Four notes are placed on the lines from bottom to top. Each note is represented by an illustration inside an oval with a partially filled-in letter: a crab with a partially filled 'r', a dinosaur with a partially filled 'i', an elephant with a partially filled 'l', and a fish with a partially filled 'i'.

_rab _inosaur _lephant _ish

Write the correct letter names in these notes:

A musical staff with a treble clef. Four empty oval shapes are placed on the lines from bottom to top, corresponding to the notes in the previous section.



Note Names

Worksheet 2

Name

ALPHABET NOTES

Colour and complete the letter names of these notes

A musical staff with a treble clef and a bass clef. The notes are: Treble clef (A on 1st line, B on 2nd line, C on 3rd space, D on 4th line, E on 5th line, F on 1st space, G on 2nd line); Bass clef (G on 2nd space, F on 3rd space, E on 4th space, D on 5th space, C on 4th line, B on 3rd line, A on 2nd line).

A grand staff with treble and bass clefs. The notes are: Treble clef (A on 1st line, B on 2nd line, C on 3rd space, D on 4th line, E on 5th line, F on 1st space, G on 2nd line); Bass clef (G on 2nd space, F on 3rd space, E on 4th space, D on 5th space, C on 4th line, B on 3rd line, A on 2nd line).

These are a bit mixed up.

A musical staff with a treble clef. The notes are: A on 1st line, B on 2nd line, C on 3rd space, D on 4th line, E on 5th line, F on 1st space, G on 2nd line.

Write the correct letters in these notes..

A musical staff with a bass clef. The notes are: A on 1st line, B on 2nd line, C on 3rd space, D on 4th line, E on 5th line, F on 1st space, G on 2nd line.



Note Names

Worksheet 4

Name

Wherever there's a C you can find an ACE



Trace the letters that turn the C into an ACE.

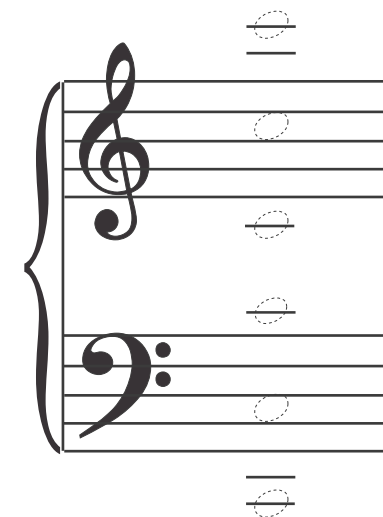
Trace them in the treble and in the bass.





Here is an ACE in the treble.

Can you trace it and find another ACE in the bass?

Here are some Cs for you to trace. Can you turn two of them into ACEs?



Draw these ACEs:

					
					
An ACE that is written in spaces and sounds high.	The highest ACE that you can draw.	The lowest ACE that you can draw.	An ACE that includes middle C	An ACE that is written in spaces and sounds low.	The ACE that you have not written yet.



Note Names

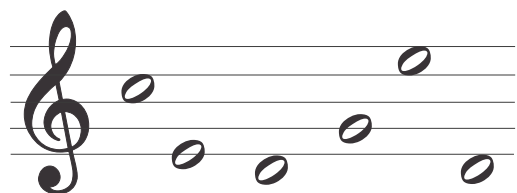
Worksheet 5

Name

Mystery Word

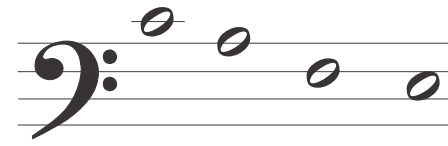
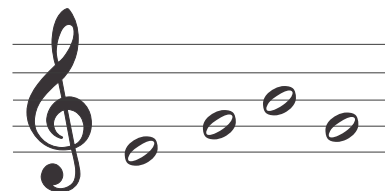
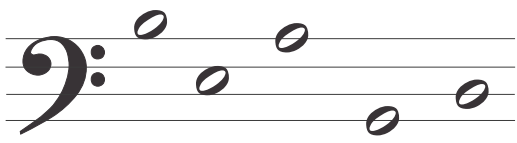
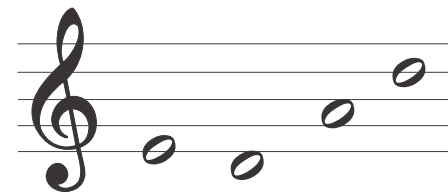
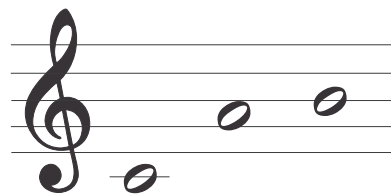
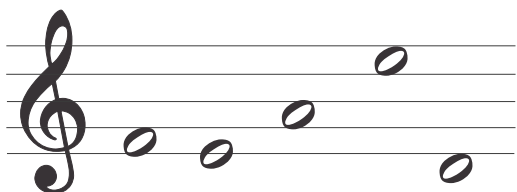
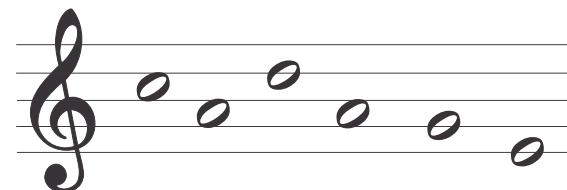
All the words used are in the middle of this page, but there are some hidden extra letters in these words. Write the correct words under the notes.

Then write all the extra letters in the middle. They spell the mystery word.



egg
bag
cadge
faded
edged
bead

feed
deaf
cab
beef
dad
cafe





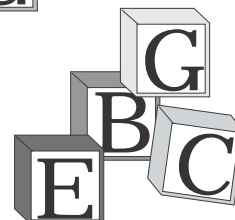
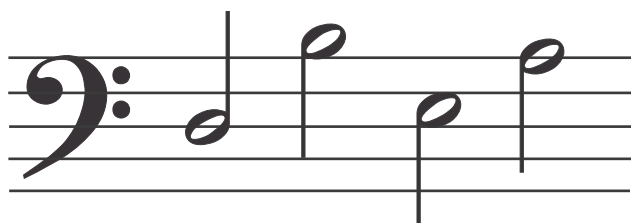
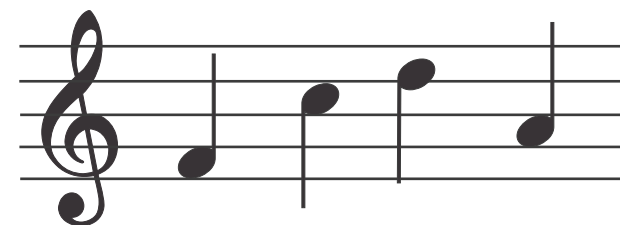
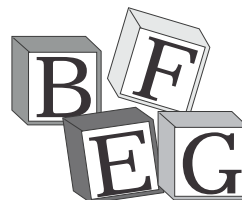
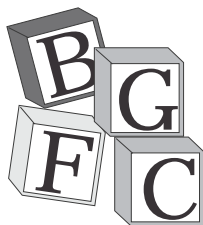
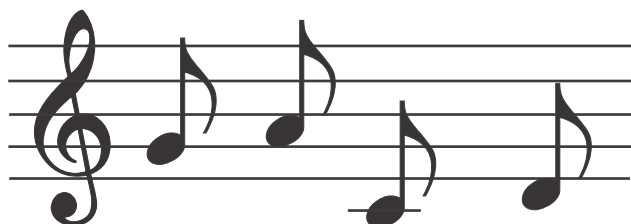
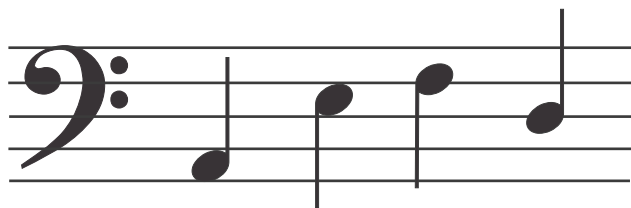
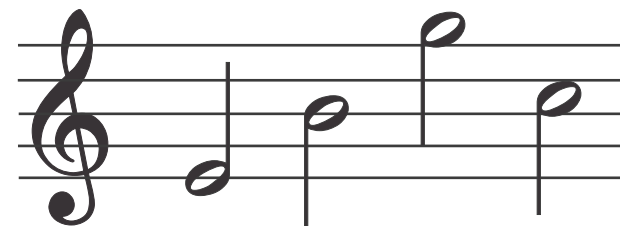
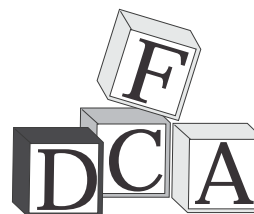
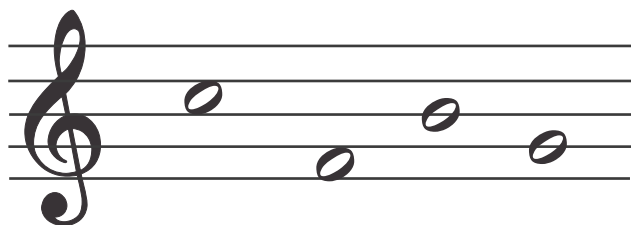
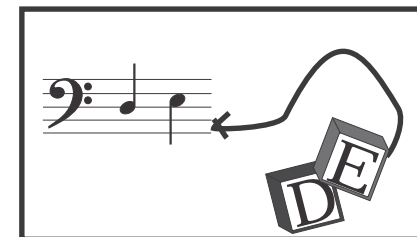
Note Names

Worksheet 6

Name

Match Them Up

Use lines to join each group of blocks with a matching group of notes.





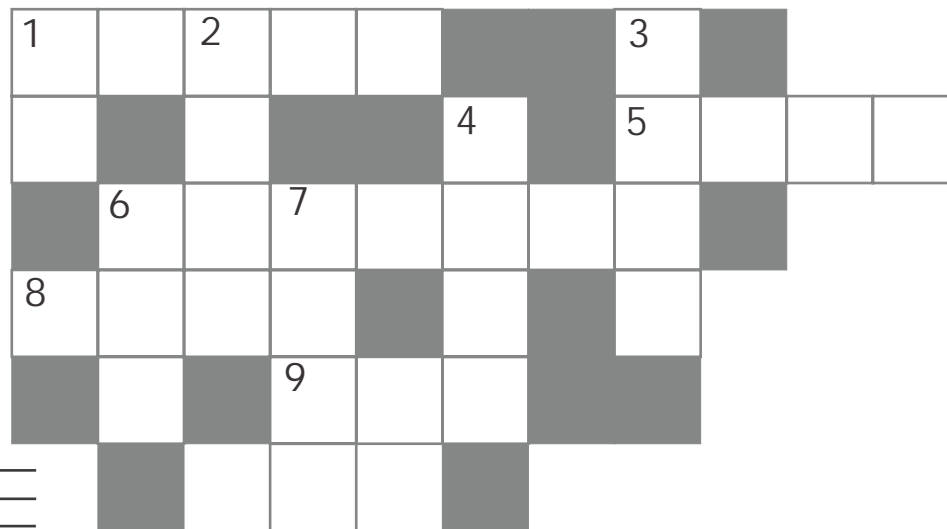
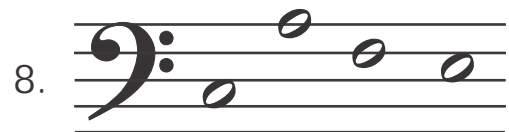
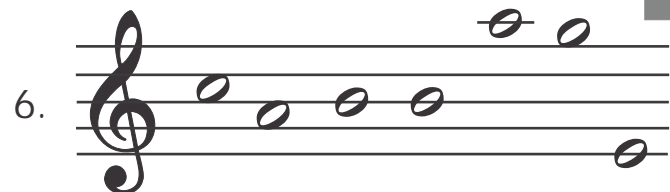
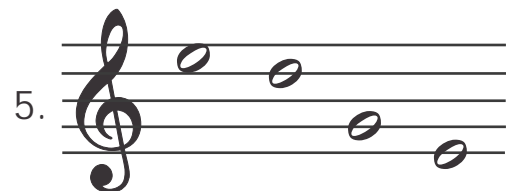
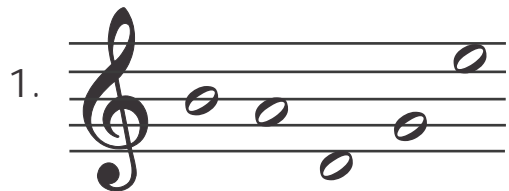
Note Names

Worksheet 7

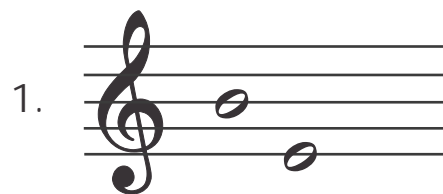
Name

Music Cross Word

Across



Down





Note Names

Worksheet 8

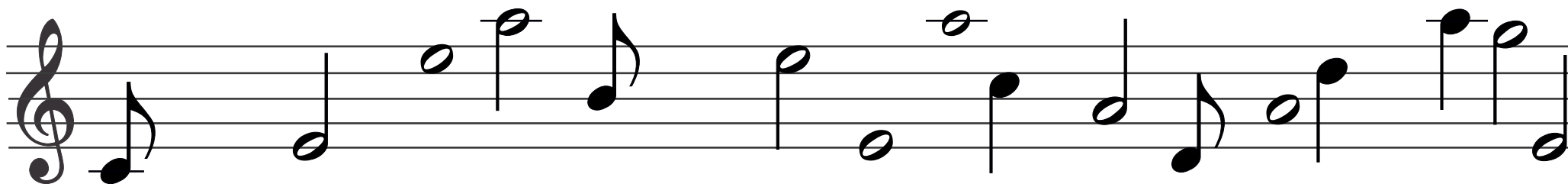
Name

Hidden Story 1

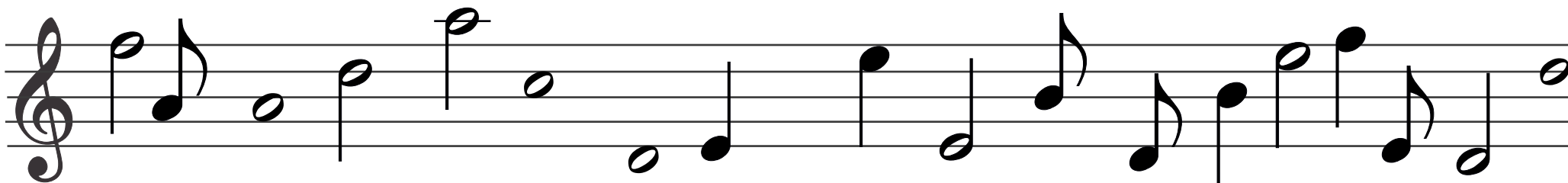
Some of the letters A B C D E F and G have been left out of this story. You can find them in the proper order on the staves below. See if you can fill them in and complete the story. Use a very sharp pencil and write neatly.



Joh _ nn S _ _ _ sti _ n _ _ _ h w _ s _ _ r _ _ t _ _ r m _ n



_ ompos _ r. H_ w _ s _ orn in _ is _ n _ _ h _ n _ h _ _ a l _ r _ _



_ _ mily _ n _ m_ ny _ hil _ r _ n. H _ w _ nt _ lin _ _ _ _ or_ he _ ie_.



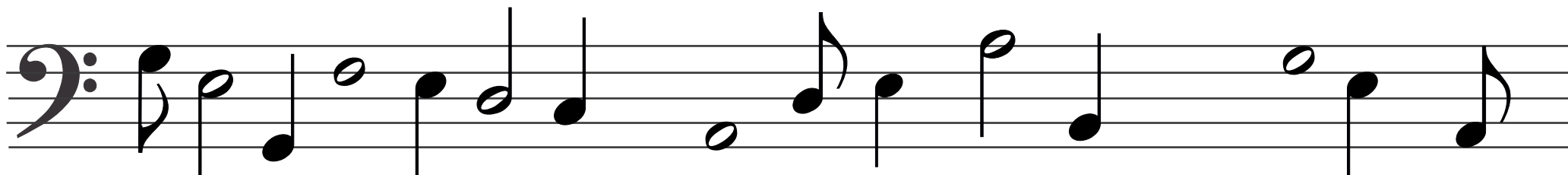
Note Names

Worksheet 9

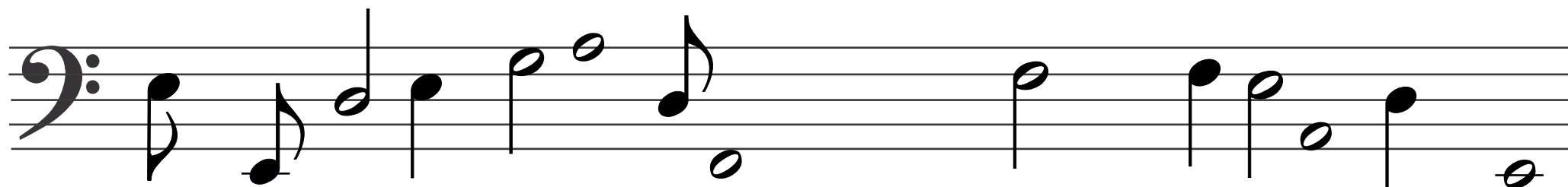
Name

Hidden Story 2

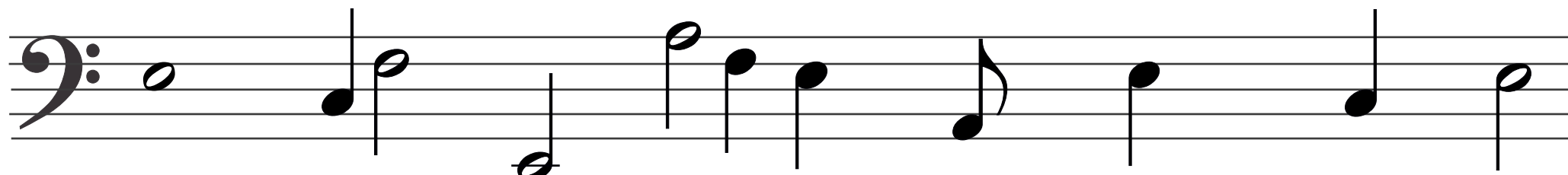
Some of the letters A B C D E F and G have been left out of this story.
You can find them in the proper order on the staves below. See if you can fill them in
and complete the story. Use a very sharp pencil and write neatly.



_ _ or _ _ ri _ _ ri _ h H _ n _ _ l w _ s _ orn in _ _ rm _ ny.



H_ liv _ _ in _ n _ l _ n _ _ or most o _ his li _ _ _ n _ wrot _



th_ Musi_ _ or th_ Roy_l _ir_works _ nd v _ ry mu _h mor_.



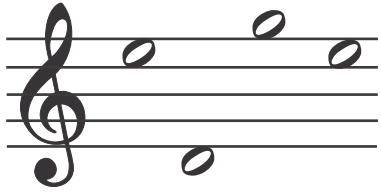
Note Names

Worksheet 10

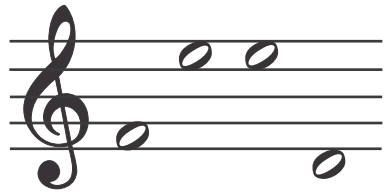
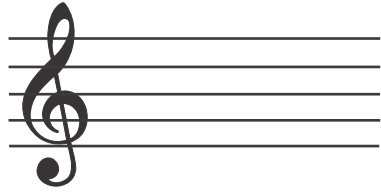
Name

Word Transfer 1

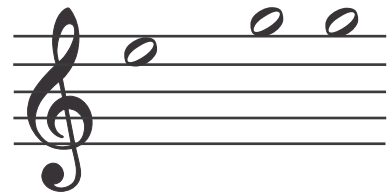
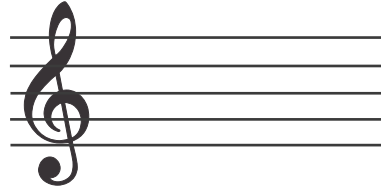
All these words are written using only notes that are in spaces. Can you figure out what the words are, and then write them again, using only notes that are on lines?



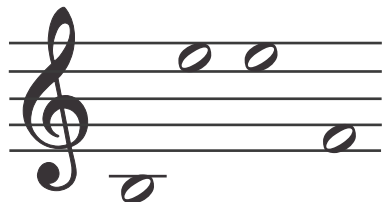
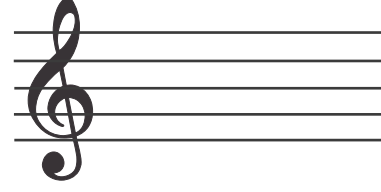
The word is:



The word is:

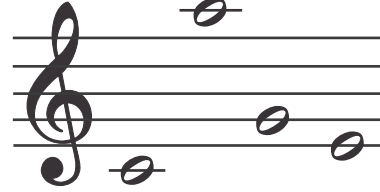


The word is:

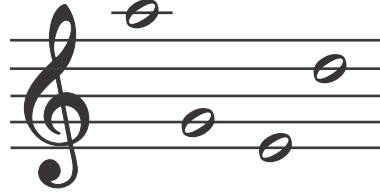
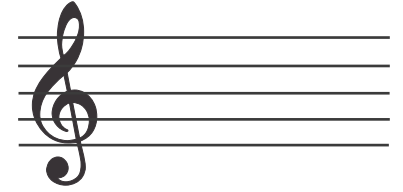


The word is:

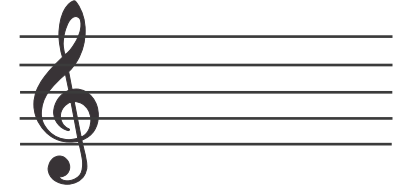
All these words are written using only notes that are on lines. Can you figure out what the words are, and then write them again, using only notes that are in spaces?



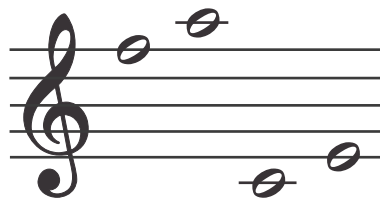
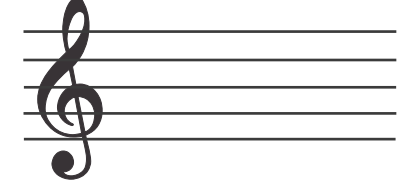
The word is:



The word is:



The word is:



The word is:



Note Names

Worksheet 11

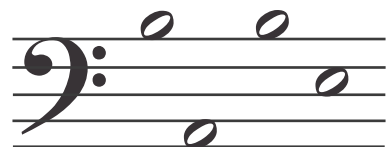
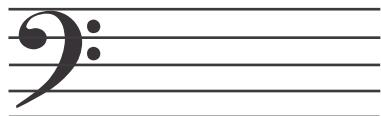
Word Transfer 2

Name

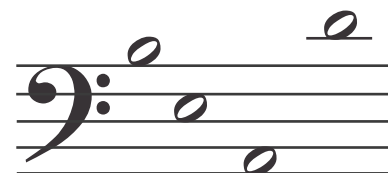
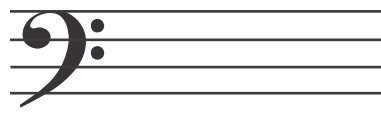
All these words are written using only notes that are in spaces. Can you figure out what the words are, and then write them again, using only notes that are on lines?



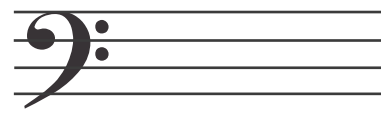
The word is:



The word is:

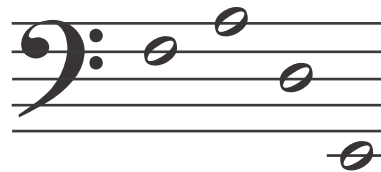


The word is:

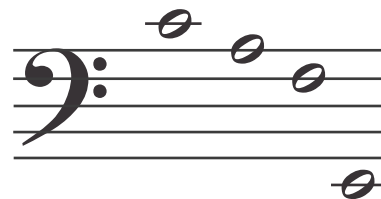
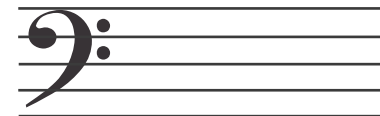


The word is:

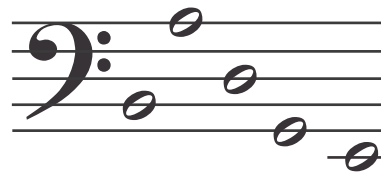
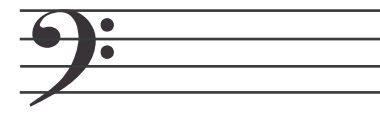
All these words are written using only notes that are on lines. Can you figure out what the words are, and then write them again, using only notes that are in spaces?



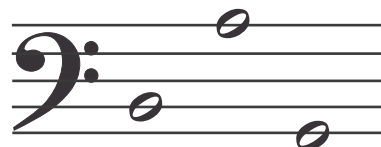
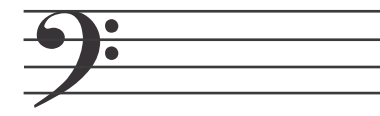
The word is:



The word is:



The word is:



The word is:



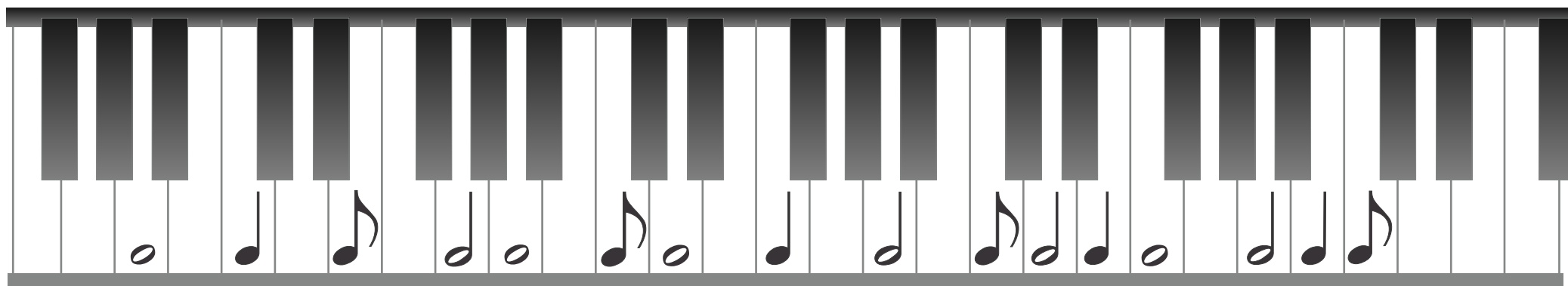
Note Names

Worksheet 12

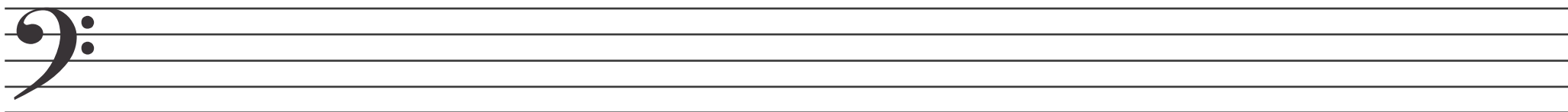
Name

Keyboard Knowledge

Place the notes drawn on the keyboard into their correct positions on the staves.
Draw cross out the notes as you use them.



↑
Middle
c



Draw a circle around any semibreve (whole note) that is also an A.
Underline the minim (half note) that is also a D.



Note Names

Worksheet 13

Information Sheet

Every Good Boy Deserves Fruit

Good Birds Don't Fly Away

FACE

Australian Children Eat Greens

The notes used in these worksheets are:



semibreve (or whole note)

The semibreve is the longest note in general use.



minim (or half note)

A minim is played for half the time of a semibreve.



crotchet (or quarter note)

A crotchet is played for half of the time of a minim.



quaver (or eighth note)

A quaver is played for half of the time of a crotchet.