



# TRACE and COPY WORKSHEETS

by Beatrice Wilder

## CONTENTS

- Worksheet 1: Semibreves And Minims
- Worksheet 2: Crotchets And Quavers
- Worksheet 3: Notes With Flags
- Worksheet 4: Joined Notes
- Worksheet 5: Rests With Flags
- Worksheet 6: More Rests
- Worksheet 7: Sharps, Flats & Naturals
- Worksheet 8: Bass Clef
- Worksheet 9: Treble Clef
- Worksheet 10: Brace, Bar Lines & Repeat Sign
- Worksheet 11: Other Signs
- Worksheet 12: A Little Revision
- Worksheet 13: Information

Copyright © Beatrice Wilder 2002  
Published in 2002 by **Music Fun**

P.O. Box 342 Katoomba NSW 2780  
19 Millyard Lane Katoomba 2780

Phone: (02) 4782 3073  
Fax: (02) 4782 6362  
Email: [info@musicfun.com.au](mailto:info@musicfun.com.au)  
Web: [www.musicfun.com.au](http://www.musicfun.com.au)



# TRACE and COPY

## Worksheet 1

Name .....

# ● Semibreves and Minims



SEMIBREVES are also called WHOLE NOTES.

Trace these six semibreves. Three are on lines and three are in spaces.

MINIMS are also called HALF NOTES.

Trace these six minims.

Trace each WHOLE NOTE and copy another one exactly the same right next to it.

Trace each HALF NOTE and copy another next to it. Make sure the stem goes on the same side as the one you copied.

Draw two semibreves in spaces.

Draw a minim in the bottom space and a minim in the top space.

Draw two whole notes on lines.

Draw two half notes on lines.




# TRACE and COPY

## Worksheet 2

Name .....

# Crotchets and Quavers



CROTCHETS are also called QUARTER NOTES  
Crotchets look like minims that are coloured in black.  
Trace these notes and turn them into crotchets.

QUAVERS are also called EIGHTH NOTES  
Quavers are like crotchets with little flags.  
Trace these notes and turn them into quavers.

Quaver stems may go up or down but their flags always turn to the right. Trace these quavers and draw an exact copy right next to each one. Remember: QUAVERS and EIGHTH NOTES are exactly the same thing. CROTCHETS and QUARTER NOTES are the same thing, too.

Turn these into quarter notes

Turn these into eighth notes

Draw two crotchets in spaces

Draw two quavers on lines

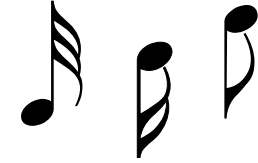



# TRACE and COPY

## Worksheet 3

Name .....

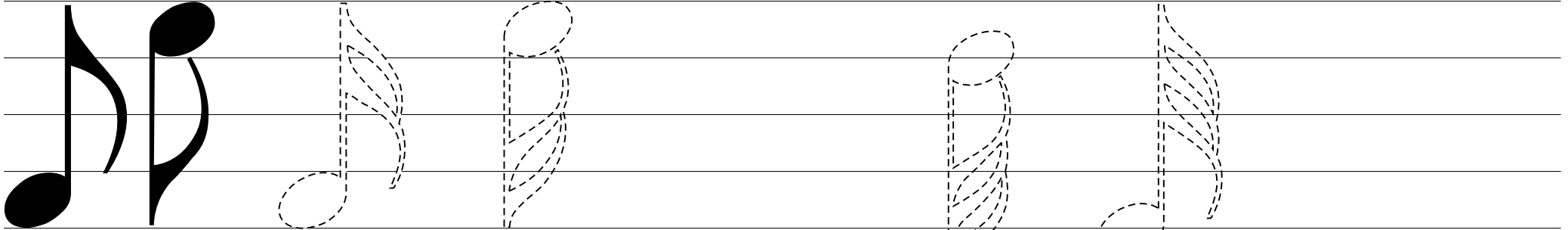
# Notes with Flags



Quavers or eighth notes have one flag.

Semiquavers or sixteenth notes have two flags. Trace and colour the semiquavers. Copy one semiquaver

Demisemiquavers have three flags. Trace and colour the demisemiquavers. Copy one demisemiquaver.

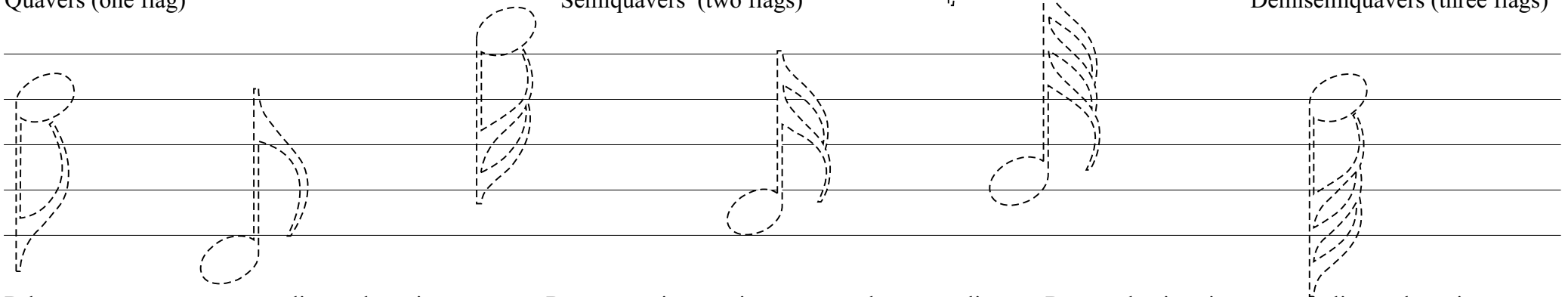


Tracethese notes and draw an exact copy next to each one.

Quavers (one flag)

Semiquavers (two flags)

Demisemiquavers (three flags)



Draw two quavers, one on a line and one in a space.

Draw a semiquaver in a space and one on a line.

Draw a demisemiquaver on a line and one in a space.




# TRACE and COPY

## Worksheet 4



Name .....

# Joined Notes

Quavers, semiquavers and demisemiquavers can be joined together. They can be joined in groups of two or more notes. Trace these joined notes and colour them black.

Copy the above quavers, semiquavers and demisemiquavers exactly as they are onto the stave below.

Make a group of three demisemiquavers.

Turn this into a group of four semiquavers.

Let's make a group of six quavers.



# TRACE and COPY

Worksheet 5

Name .....

## Rests with Flags



All notes have matching rests. Notes with one, two or three flags have rests with the same number of flags. Trace and colour in the notes with their matching rests. Copy each rest.

Trace and colour in two quaver rests and draw two more.

Do the same with the semiquaver rests.

And the same with the demisemiquaver rests.

Draw a matching rest for each of the following notes.

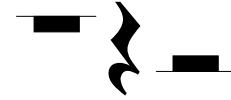



# TRACE and COPY

## Worksheet 6

Name .....

# More Rests



A semibreve rest looks like a heavy box under the line.  
Trace and colour in the semibreve rest and copy one more.

A minim rest looks like a light box on top of the line.  
Trace and colour in the minim rest and copy two more.

A crotchet rest is a bit more difficult..  
Trace and colour these three crotchet rests..

Trace and colour the first crotchet rest.

The next four crotchet rests have bits missing. Add the missing parts.

Now trace and copy a crotchet rest.

And a minim rest.

Trace these notes and draw the correct rests next to each one.

Trace one more crotchet rest and copy it.

--	--	--	--



# TRACE and COPY

## Worksheet 7

Name .....

# Sharps, Flats and Naturals

Trace the sharp on the line and the sharp in the space and copy each one twice. Do the same with the flats.

And the same with the natural signs.

Sharps, flats and naturals must go on the same line or in the same space as the note that they affect. Trace the partners below and copy them exactly as they are.

Trace the crotchets and draw a sharps next to them.

Trace the minims and draw a flats next to them.

Trace the quavers and draw a naturals next to them.



# TRACE and COPY

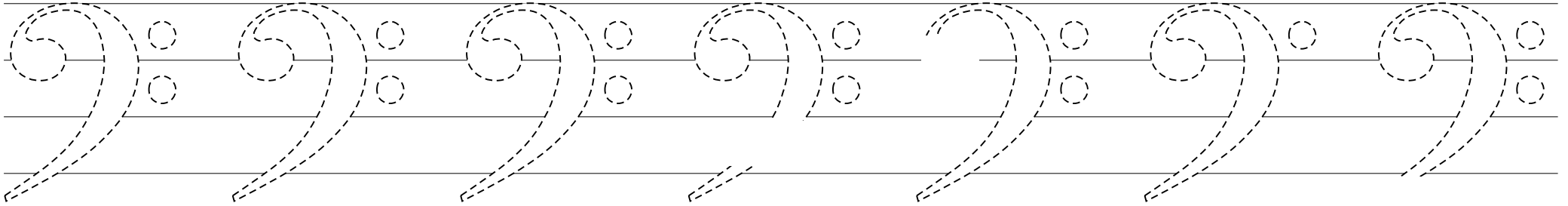
Worksheet 8

Name .....

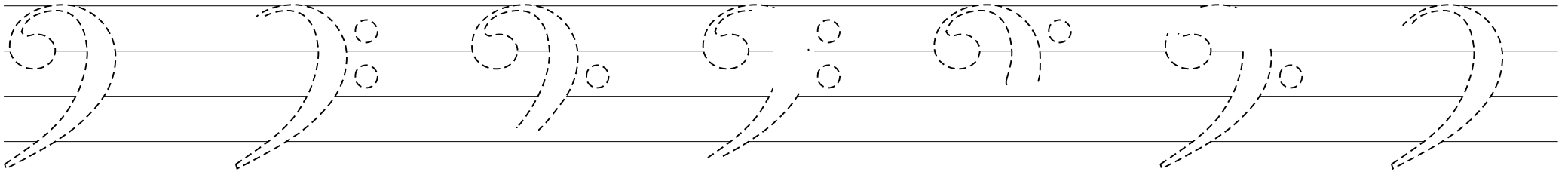
# Bass Clef

Trace and colour these BASS CLEFS. Remember to include the DOTS.

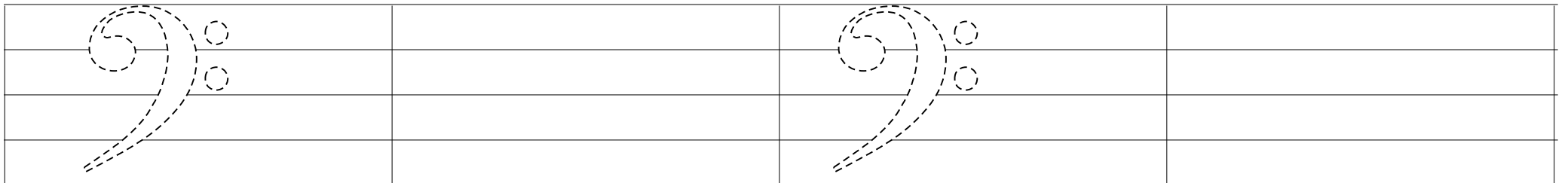
These bass clefs have bits missing. Complete them and then trace and colour them.



These bass clefs have even more bits missing. Complete them and then trace and colour them.



Now trace a complete bass clef . . . . . and see if you can draw one of your own . . . Let's try tracing again . . . . . and draw another one by yourself.





# TRACE and COPY

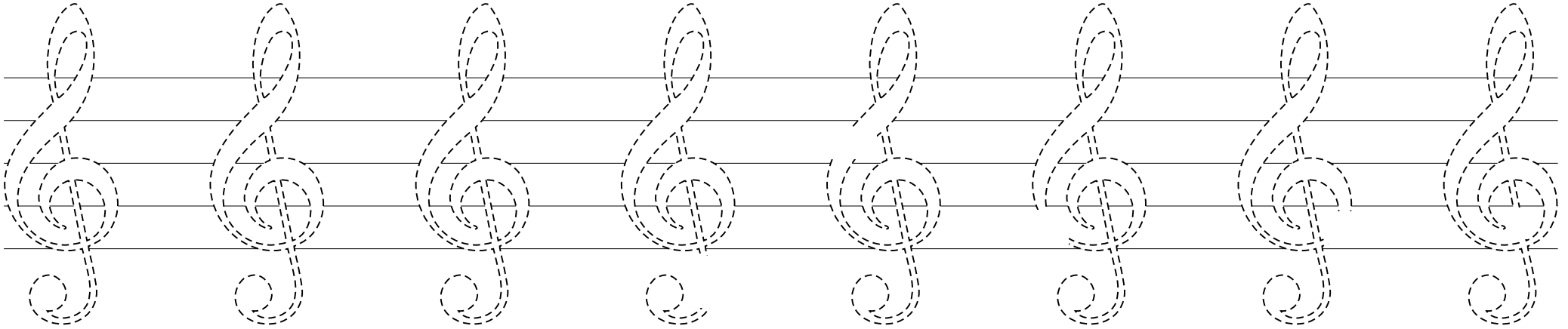
Worksheet 9

# Treble Clef

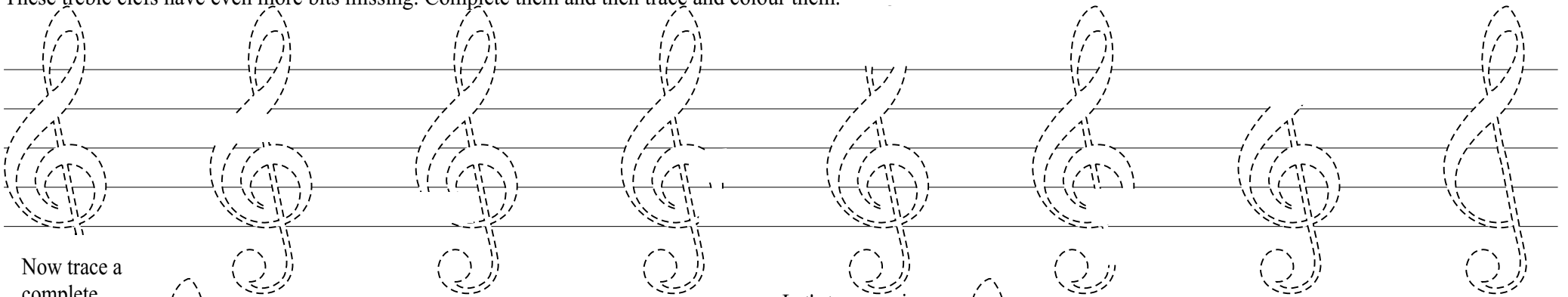
Name .....

Trace and colour these TREBLE CLEFS. Use bright colours.

These treble clefs have bits missing. Complete them and then trace and colour them.



These treble clefs have even more bits missing. Complete them and then trace and colour them.

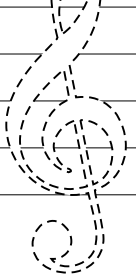
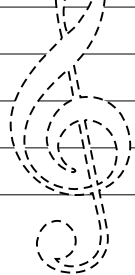


Now trace a complete treble clef

Draw a treble clef.

Let's trace again.

Draw a treble clef.



# TRACE and COPY

## Worksheet 10

Name .....

# Brace, Bar Lines and Repeat Sign

The BRACE is the line and bracket joining two staves. Trace and colour the BRACE.

REPEAT SIGN tell you to play the music again. Trace the repeat dots.

Copy the BRACE, BAR LINE and REPEAT SIGN here.

BAR LINES divide the music into bars..

Trace the BRACE, BAR LINE and REPEAT SIGN here.

Copy the BRACE, BAR LINE and REPEAT SIGN here.

---

---

---

---

---

---

---

---

---

---



---

---

---

---

---

---

---

---

---

---



# TRACE and COPY

## Worksheet 11

Name .....

# Other Signs

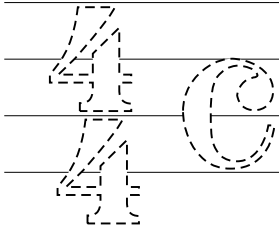
Two time signatures both meaning 4 beats in each bar

This time signature means 3 beats in each bar

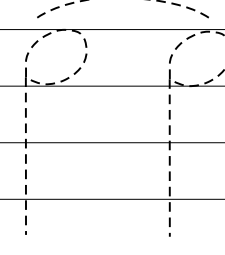
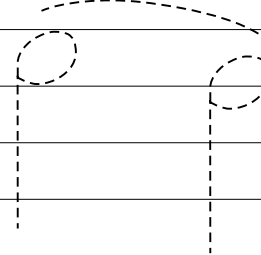


SLUR or phrase line .....and a TIE

Double bar lines (end of section)



Trace the PAUSE (hold the note longer)



(gradually get louder ..... and gradually get softer)

Trace all the signs and copy them onto the staff below

Four blank musical staves for tracing and copying the signs.

Draw a PAUSE here ..... a sign that means three beats in a bar ..... a SLUR ..... a TIE

Four musical staves for drawing the signs: PAUSE, 3/4 time signature, SLUR and TIE, and SLUR and TIE.



# TRACE and COPY

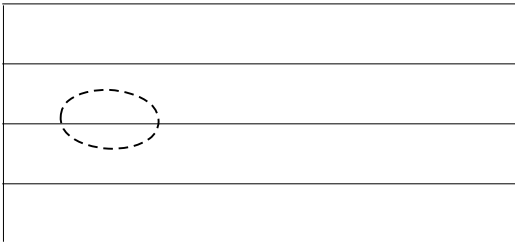
Worksheet 12

Name .....

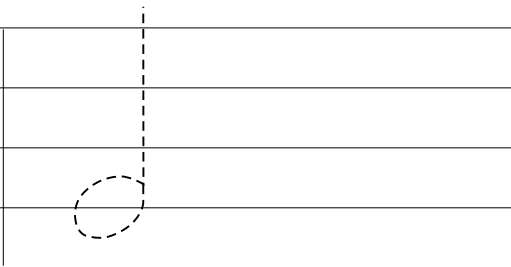
## A Little Revision

TRACE, COLOUR and COPY

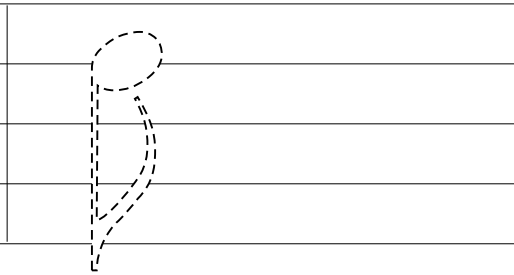
SEMIBREVE



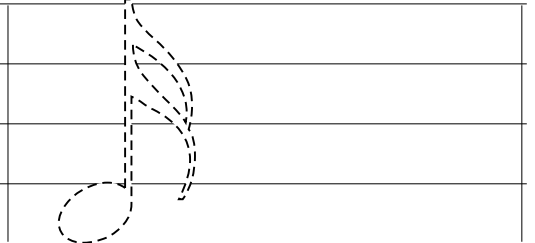
CROTCHET



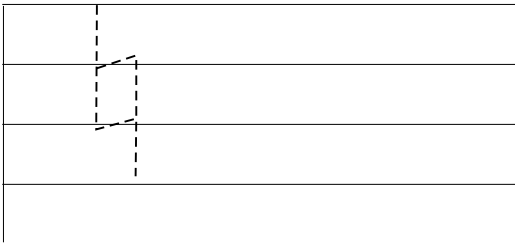
QUAVER



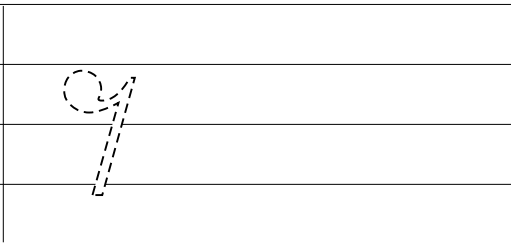
SEMIQUAVER



NATURAL



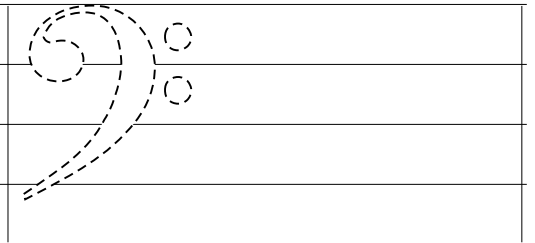
QUAVER REST



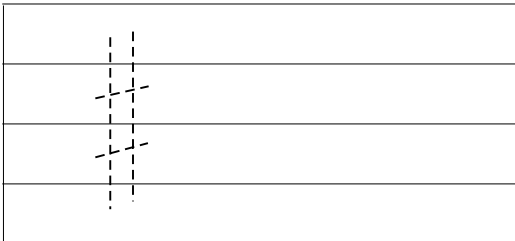
CROTCHET REST



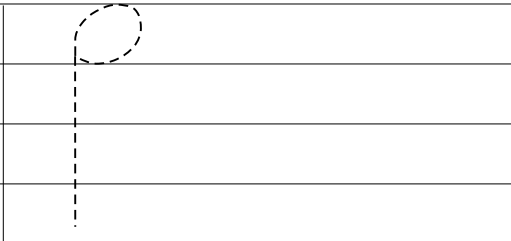
BASS CLEF



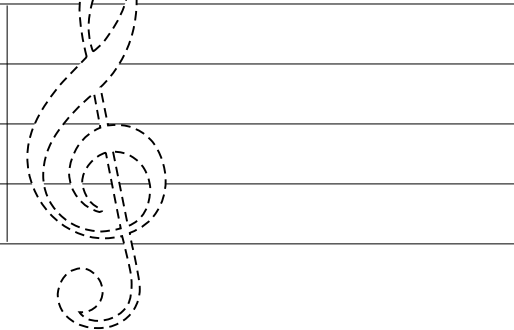
SHARP



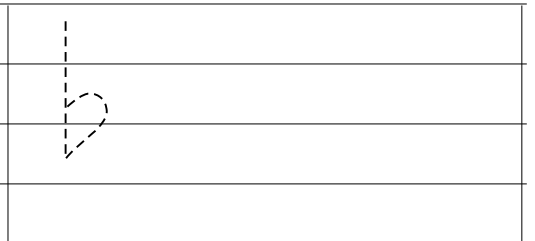
PAUSE



TREBLE CLEF



FLAT







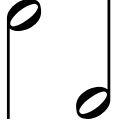


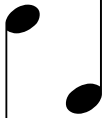








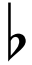





# TRACE and COPY

## Worksheet 13

Name .....

# Information

 SEMIBREVES are also called WHOLE NOTES.	 SEMIBREVE REST	 BASS CLEF  TREBLE CLEF
 MINIMS are also called HALF NOTES.	 MINIM REST	 A PAUSE tells you to hold a note a little longer than its value.
 CROTCHETS are also called QUARTER NOTES	 CROTCHET REST	 The BRACE is the line and bracket joining two staves.
 QUAVERS or eighth notes Quavers have one flag.	 QUAVER REST	 REPEAT SIGN tell you to play the music again. Trace the repeat dots.
 SEMIQUAVERS or sixteenth notes have two flags.	 SEMIQUAVER REST	 SHARP  FLAT  NATURAL
 DEMISEMIQUAVERS have three flags.	 DEMISEMIQUAVER REST	Some common TIME SIGNATURES 